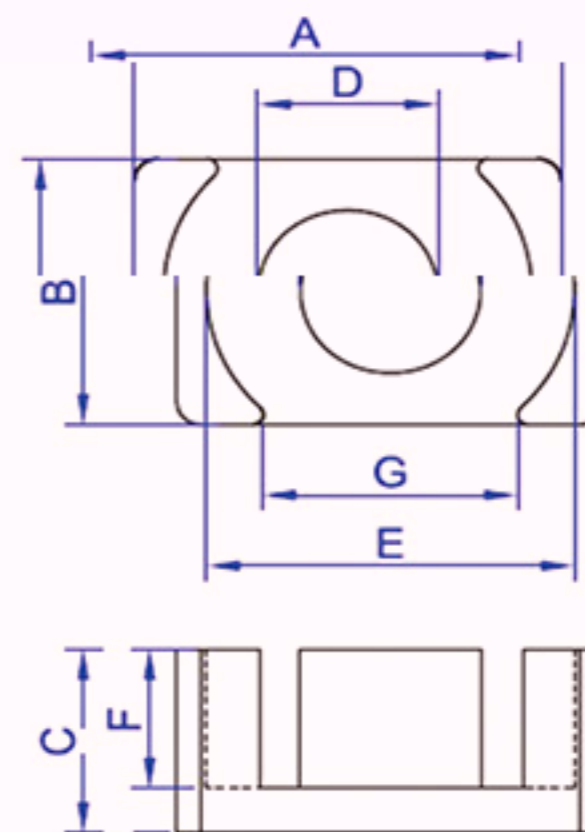
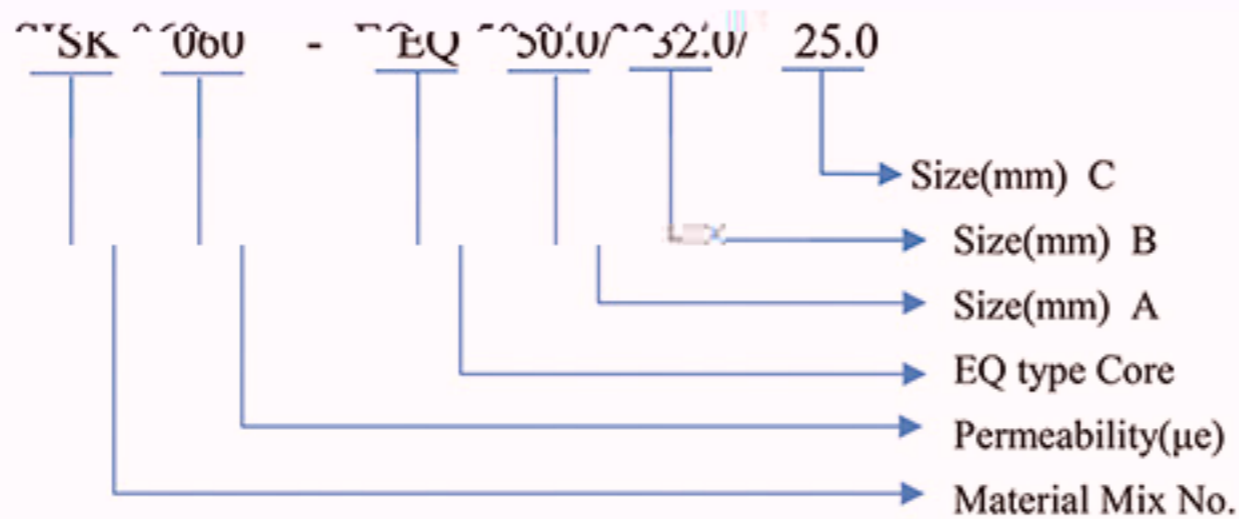


# PowerCore | EQ-Core



SinoMag. Material Mix No  
 SS:Sendust Cores  
 SK:FeSi Cores

## 物理参数Physical Parameters

P/N	A (mm)	B (mm)	C (mm)	D (mm)	E (mm)	F (mm)	G (mm)	Le (mm)	Ae (mm <sup>2</sup> )	Ve (mm <sup>3</sup> )	A <sub>L</sub> ±10%			
											μ26	μ40	μ60	
EQ26.5/19.0/10.3	26.5	19.0	10.1	12.0	22.6	6.8	6.8	16.0	54.7	119.8	6555.7	72	110	165
EQ26.5/19.0/12.4	26.5	19.0	12.4	12.0	22.6	9.1	9.1	16.0	63.9	119.8	7655.2	61	94	141
EQ32.0/22.0/10.3	32.0	22.0	10.3	13.5	27.6	6.6	6.6	20.0	60.3	152.3	9183.7	83	127	190
EQ32.0/22.0/15.2	32.0	22.0	15.2	13.5	27.6	11.5	11.5	20.0	79.9	152.3	12168.8	62	96	144
EQ36.0/26.0/17.4	36.0	26.0	17.4	14.4	32.0	13.4	13.4	22.2	94.7	180.8	17121.8	62	96	144
EQ44.5/28.0/19.9	44.5	28.0	19.9	14.9	36.5	15.4	15.4	27.5	115.2	199.7	23005.1	57	87	131